



# The Mountain State Greenletter

Volume 14, Issue 3  
March 2022

West Virginia Golf Course Superintendents Association

## Board of Director's Message

We are now into the first days of Spring! Pretty optimistic that we can put the snowplow away for a while, but you can never be too sure with the weather of West Virginia.

Just a couple of reminders for some upcoming meetings...first off, we have our Spring meeting scheduled for Tuesday, May 10th at Marietta Country Club. Lunch will begin at 11, followed by golf at noon.

The 37th annual William C. Campbell Scholarship and Research Fundraiser is also set to take place at Bel Meadow Golf Club on Monday, June 13th. Registration is at 10 with a shotgun outing beginning at noon.

Looking forward to a solid turnout for these events. I'm also happy to announce it looks as though we will be having our Turf Conference back after a two year hiatus. We should have more information on the dates and location in the near future.

Thank you,  
Bobby Cline, CGCS  
Guyan G&CC

**WVGCSA New Website: [www.wvgcsa.org](http://www.wvgcsa.org)**

### **Upcoming Events:**

**Spring Meeting @ Marietta CC | Tuesday, May 10th**  
**Lunch and Meeting - 11am | Golf at Noon**  
**Cost - \$40 per person**

**Scholarship Fundraiser**  
**Monday, June 13th**  
**Bel Meadow Golf Club**

**Turf Conference**  
**Tuesday, November 1st**  
**Stonewall Resort**

Relax. We've got this.



Country Club of Buffalo  
Williamsville, New York

## ASPEN CORPORATION

2400 Ritter Drive  
Daniels, WV 25832  
(304) 763-4573

NEW CONSTRUCTION  
RENOVATION  
RESTORATION



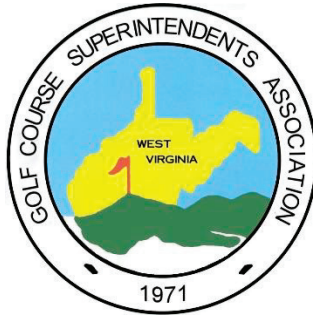
## LANDSCAPE SUPPLY

A W.S.CONNELLY COMPANY

Taking you to new heights.



[www.landscapesupplyva.com](http://www.landscapesupplyva.com)



**The West Virginia Golf Course Superintendents Association**  
presents the 37th Annual Scholarship & Research Fundraiser Golf Tournament

**Bel Meadow Golf Club – Mt. Clare, WV**

**Monday, June 13th, 2022**

**Registration 10:00 am | Shotgun Start 12:00 pm**

**Format: 4 person scramble with no minimum Handicap**

**Special Club rate of \$600 per 4 person team**

This must include 4 members from one Club or Resort

*(Superintendent, Owners, Managers, Assistants, Golf Pros, Spray Tech or Mechanics, etc.)*

**Entry Form**

**\$700 per team (\$600 for club teams) includes:** *Closest to the Hole, Longest Putt, Longest Drive & 50/50 Contests, Boxed Lunch & 4 beverage Tickets provided for on the course. Umbrellas will be given for the tee gift this year! Cash bar and cook out following golf.*

**Total Enclosed \$ \_\_\_\_\_**

Golf Team Name \_\_\_\_\_

Player # 1 \_\_\_\_\_ Email \_\_\_\_\_

Player # 2 \_\_\_\_\_ Email \_\_\_\_\_

Player #3 \_\_\_\_\_ Email \_\_\_\_\_

Player #4 \_\_\_\_\_ Email \_\_\_\_\_

**ENTRIES ARE LIMITED TO THE FIRST 36 TEAMS. PAYMENTS MUST BE INCLUDED WITH THIS REGISTRATION FORM. \*PLEASE RETURN BY MAY 28th\***

Make checks payable to “**WVGCSA**” and return to:

WVGCSA | PO Box 335 | Charleston, WV 25322

Call Tony Coppa for Questions at (304)280-0034

*To pay by credit card, contact Amber Breed at 304-638-8978*



## Proud Gold Sponsor

of the 2022 West Virginia Superintendents Association Annual Scholarship and Fundraiser Golf Tournament

Thank you Golf Course Superintendents for your long hours, dedication and expertise to the game we love.

[www.wvga.org](http://www.wvga.org) | 304.391.5000

Immediate knockdown.  
Long residual.  
**Spotless fairways.**

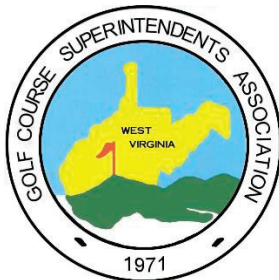


*Keep your fairways  
dollar-spotless  
for up to 28 days.*

Visit [betterturf.basf.us](http://betterturf.basf.us) for details,  
and get clean fairways your players will love.

 **BASF**  
We create chemistry.

Always read and follow label directions.  
Xzemplar is a registered trademark of BASF. © 2016 BASF Corporation. All rights reserved.



# The West Virginia Golf Course Superintendents Association

presents the 37th Annual Scholarship & Research Fundraiser Golf Tournament

## Bel Meadow Golf Club, Mt. Clare, WV

Monday, June 13, 2022

The Annual Fundraiser has been a huge success thanks to your support.

### Gold Sponsor-\$1000

4 Person team entry, Name on Major Sponsor Sign, Tee Sponsor Sign, & a Commemorative plaque

### Silver Sponsor-\$850

4 Person Team Entry, Name on Lunch Sponsor Sign, & Tee Sponsor Sign

### Bronze Sponsor-\$750

4 Person Team Entry & Tee Sponsor Sign

**Gold Sponsor wishing to add more than one team will receive a discounted price of \$600 for each additional team!**

**Sponsorship will help to provide Lunch, Beverage Cart, and Cook Out at the final reception. Your continued support is crucial to the success of the fundraiser.**

**\*We are asking our Corporate Members to please bring an item to donate to the Association to be auctioned at the fundraiser to raise more money for our scholarships! In 2021, we awarded scholarships to 5 recipients!**

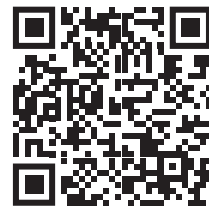
All Corporate Sponsors must be received by June 1, 2022. We would like to thank you in advance for your continued support. Feel free to contact me at (304)280-0034.

**Thank You, Tony Coppa  
Fundraiser Chairman**

# Get Ready for **FASTER RECOVERY**

Charge your turf to recover faster from aeration stress with the biostimulants and targeted nutrition found in the Harrell's Core Aeration Recovery Program. Designed for plant health through foliar and soil feeding, you'll equip your turf to endure stress better and recover faster. Rewarding you with improved turf quality.

Ask your Harrell's Representative for more information on the Harrell's Core Aeration Recovery Program



View the Harrell's Core Aeration Recovery Program



[www.harrells.com](http://www.harrells.com) | 800.282.8007  
Employee-Owned

# BEST SAND

A Covia Product

**44** OF  
**TOP 100** US GOLF COURSES  
RELY ON US

FIND OUT WHY

[coviacorp.com/golf](http://coviacorp.com/golf)



# TEE SPONSOR FORM

The West Virginia Golf Course Superintendents Association will be holding their 37th Annual William C. Campbell Scholarship and Research Fundraiser Golf Tournament on Monday, June 13th, 2022 at Bel Meadow Golf Club.

The Annual Fundraiser has been a huge success thanks to your support. We will once again be offering hole sponsorships for you to consider. Each hole sponsor will have their sign clearly displayed on a tee, as well as displayed on the Sponsor Board during the event. With your continued support, we can make this year's event our most productive ever as well as great fun for all involved.

If you would like to change the verbiage on last year's tee sign or if you are a new sponsor, please include your verbiage below. Please, no more than 4 words allowed per line.

Line #1 \_\_\_\_\_  
Line #2 \_\_\_\_\_  
Line #3 \_\_\_\_\_  
Line #4 \_\_\_\_\_

Contact Person \_\_\_\_\_  
Phone Number \_\_\_\_\_  
Address \_\_\_\_\_

Company \_\_\_\_\_  
\_\_\_\_\_  
(If different from above)

Number of Holes sponsored \_\_\_\_\_ @ \$100.00 for 1<sup>st</sup> sign & \$50.00 for additional tee signs \$ \_\_\_\_\_ Total Sponsor

Make checks payable to: **WVGCSA / William C. Campbell**

Return to: WVGCSA  
PO Box 335  
Charleston, WV 25322

If paying by credit card, please call Amber Breed at 304-638-8978

# Using GPS to Cope With Labor Woes

By Elliott Dowling, agronomist, Northeast Region

The labor shortage that has hindered golf course maintenance and many other service industries over the last two years doesn't appear to be letting up. There has been a lot of discussion on how to make job openings more attractive to potential employees, but the fact remains that without enough staff, the maintenance program may have to change. While I'm hopeful that everyone finds all the staff members they need for the coming year, it's also in your best interests to prepare for less than a full team, and to think about what that means for your maintenance plan.

A USGA GPS Service visit shows where golfers are going and, more importantly, where they're not going during their round. This data can help you focus maintenance efforts on the most critical areas while saving time and labor in areas that do not come into play as often. The GPS data is tied to our DEACON™ platform to better help you identify the most critical areas for maintenance or where changes to the course can potentially be made to reduce maintenance requirements without impacting play.

I wish I had an answer to the labor issue facing golf courses, but I don't. However, I do have solutions to help you get the most from the staff you have, and that starts with identifying where maintenance is needed most. Using staff time efficiently will help your facility achieve its goals of good playability, healthy turf and mindful use of resources.

To learn more about how golfer traffic data from a USGA GPS Service visit can help you better utilize labor and other resources, email us at [GreenSection@usga.org](mailto:GreenSection@usga.org).

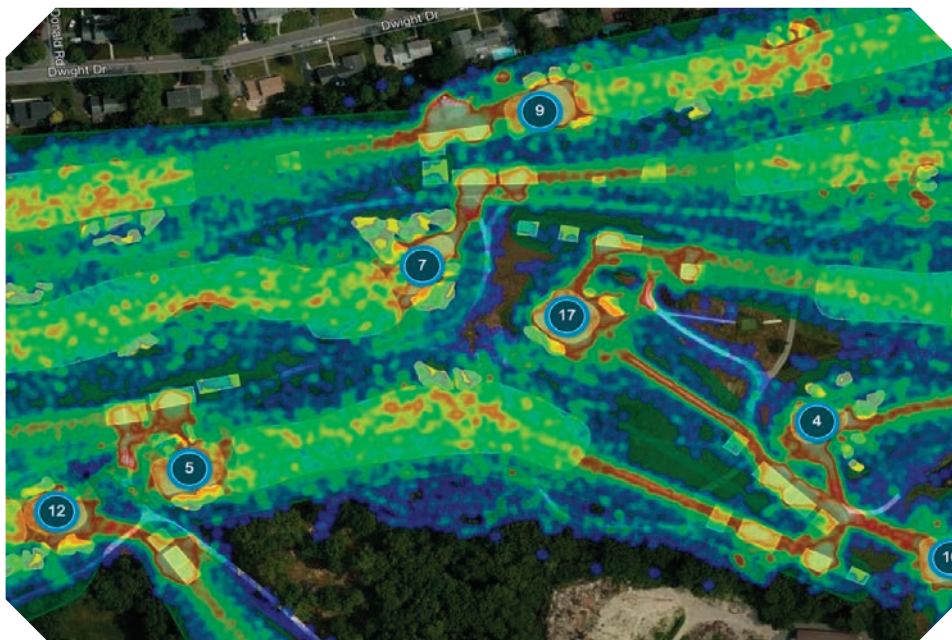
Northeast Region Agronomists:

Adam Moeller, director, Green Section Education – [amoeller@usga.org](mailto:amoeller@usga.org)

Darin Bevard, director, Championship Agronomy – [dbevard@usga.org](mailto:dbevard@usga.org)

Elliott Dowling, agronomist – [edowling@usga.org](mailto:edowling@usga.org)

John Daniels, agronomist – [jdaniels@usga.org](mailto:jdaniels@usga.org)



*Using tools and data that show where golfers are most active can help your facility prioritize maintenance and eliminate turf areas and course features that do not come into play.*





# ADVANCED TURF SOLUTIONS®

We are your one stop shop for  
fertilizer, chemical, and seed  
solutions for your golf course.

## Marshall Klay

Golf Course Sales  
Representative

[mklay@advancedturf.com](mailto:mklay@advancedturf.com)

(304) 909-1511



[advancedturf.com](http://advancedturf.com)

[f](#) [@](#) [@AdvancedTurf](#)



### FROM INDUSTRY STAPLES TO THE LATEST INNOVATIONS,

Walker Supply Inc. has the quality products  
you need and the local expertise  
you desire in a supply partner.

FERTILIZER PESTICIDES SOIL AMENDMENTS SEED POND PRODUCTS ICE MELT



**WALKER SUPPLY INC.**

TURF & ORNAMENTAL SUPPLIER SINCE 1991

**800.792.5537**

[WWW.WALKERSUPPLYINC.COM](http://WWW.WALKERSUPPLYINC.COM)